

- Matthew Wilhoite
- Ports Authority Police
- Corporal- Investigator
- TFO- Homeland Security
- mwilhoite@gaports.com



**PORTS AUTHORITY
POLICE**

Georgia Ports Authority Garden City Terminal

- Savannah/Garden City is the Largest single-terminal operation @ 1500 acres (9400ft berth)
- 2024 the GPA moved 5.55 million TEU's (12.5% increase)
- 53 truck lanes (2030 @100 lanes)
- March 2025: 333,571 truck turns
- US Customs Facilities on Terminal
-



Garden City Terminal Intermodal

- Largest on terminal intermodal facility in North America
- 2 Million TEU capacity
- 2 Class One rail Services. CSX/NS
- On Terminal capacity for 10ea, 10,000 feet in length trains
- Vessel to rail departure in 24 hours



Port of Brunswick

- Nations busiest for Vehicles and heavy equipment
- Phase 1: 262-million-dollar upgrade completed
- Doubling the rail capacity- 340,000 autos (10 trains weekly)
- Phase 2: Will bring 590,000 vehicles by rail
- 90 percent of these vehicles are US Made Exports



Blue Ridge Connector BRC-

- 104-Acre site in NE Ga, Hall County
- 2026- Targeted completion date
- 600-mile round trip to/from Garden City Terminal
- Norfolk Southern Rail Line
- 200,000 container capacity a year



Appalachian Regional Port ARP-

- 42 Acre site in NW Ga, Murray County finished in 2018
- 388-mile route to/from Savannah
- CSX Rail Line
- 75,000 container capacity a year
- 10-year development plan is to double its capacity
- Introduction into Cargo Theft



Georgia Ports Authority

Ocean Terminal

- Ocean Terminal @ 200 acres, (2650ft Berth).
- Currently, under a 1.4-billion-dollar terminal upgrade.
- Adding 2 million TEU capacity
- US Customs Facilities on site
- Access ramp to Hwy 17 into South Carolina
- New Terminal on Hutchinson Island





The image shows an offshore oil rig structure with several tall, vertical derrick-like components. A white rectangular box with a blue top section is overlaid on the image, containing the text '156 ft'. To the right of this box, a vertical scale bar is visible, with a green segment at the top and a blue segment below it. The rig is situated on a body of water, and the sky is clear and blue.

156 ft

YoY GROWTH



SOURCE: GPA INTERNAL DATA (EIS)

SOURCE: TERRY COLLEGE OF BUSINESS, UNIVERSITY OF GEORGIA, 2024

Criminal Investigations Unit

- 4 Investigators: 7 Days a week
- 3 Task Force Officers: DEA, FBI, HSI
- Background Investigations
- Serious injuries and deaths
- Intelligence gathering, Analytics
- Cargo theft, **Smuggling,**
Auto Theft
- Any incident with a Port Nexus



The mission of the Georgia Ports Authority Police Department is to **provide quality police services**, rooted in the principles of professionalism and community **collaboration**, while supporting the Authority's broader mission of **safe, secure, and efficient facilitation of global commerce**.

A.R.P. Rail Theft

- 2018/2019 Uncharted Water: Port to Port
- How is this affecting us?
- CSX Agents
- Local Law Enforcement
- Private Partners: Port Customers, GCTIG, TJX, vested parties of interest
- How is this affecting You?



SAVANNAH:

GATEWAY TO AMERICAN
COMMERCE:

POPULATION = CARGO

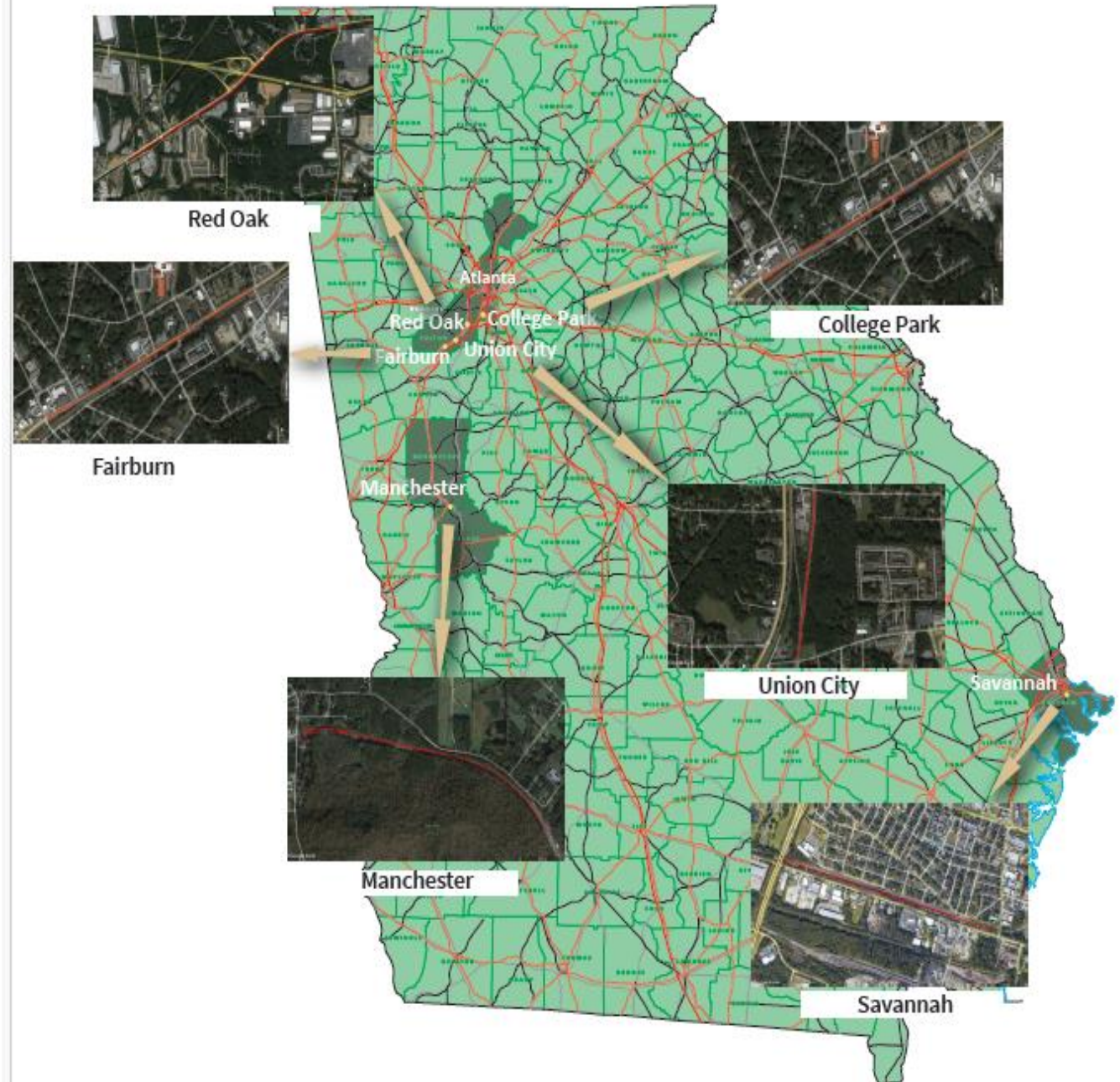
20%

of the U.S.
Population and
Industry is best
served by
Port of Savannah

44% Within easy reach of inland
connectivity infrastructure

Redefining Our Role

- Minimize disruption to ensure seamless and efficient facilitation of global commerce
- Police presence and reports (UCR-FBI)
- CIU: Respond, collect and analyze, generate intelligence report for dissemination.
- CSX Agents: Generate anomalies within the train route
- Who (Victim), What, When, Where
- Initiatives to stay ahead of potential risk



Map of train cargo thefts locations in Georgia.









SPARTAN H 03/14/2024 05:10:19



SBS 4110

GC-G4Gb

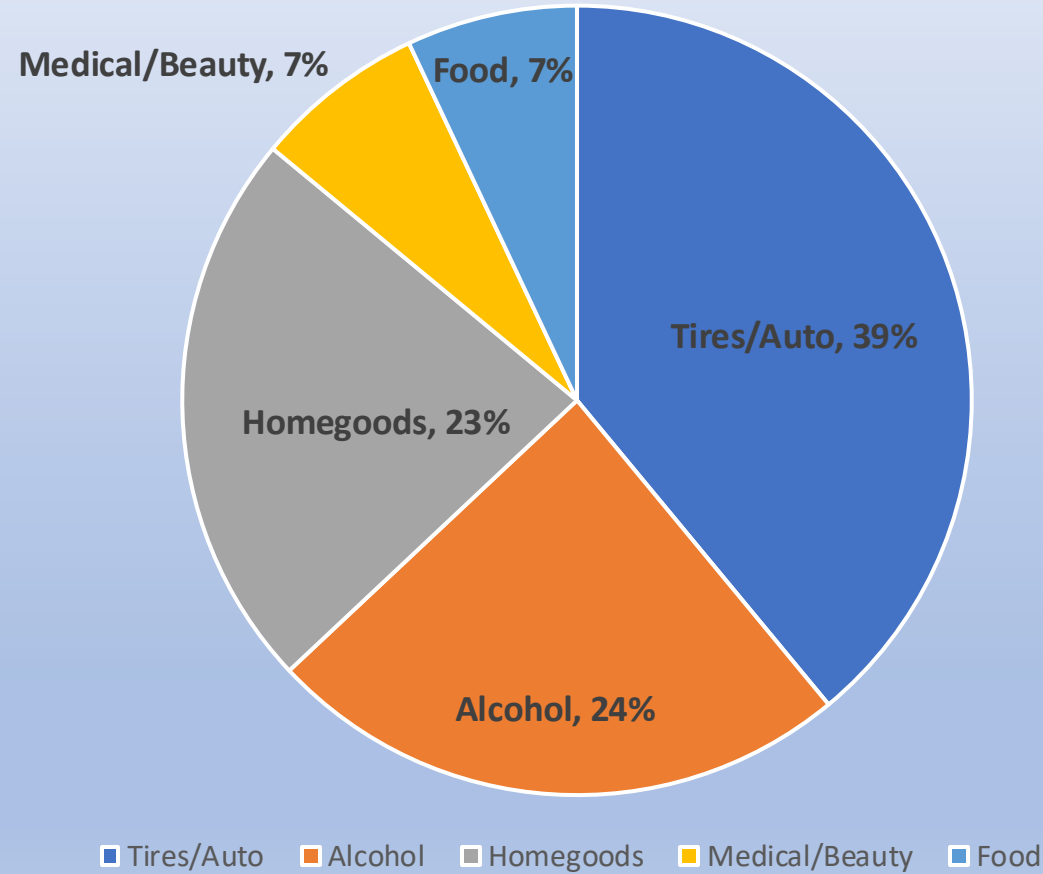
M

07/05/2023 15:29:49

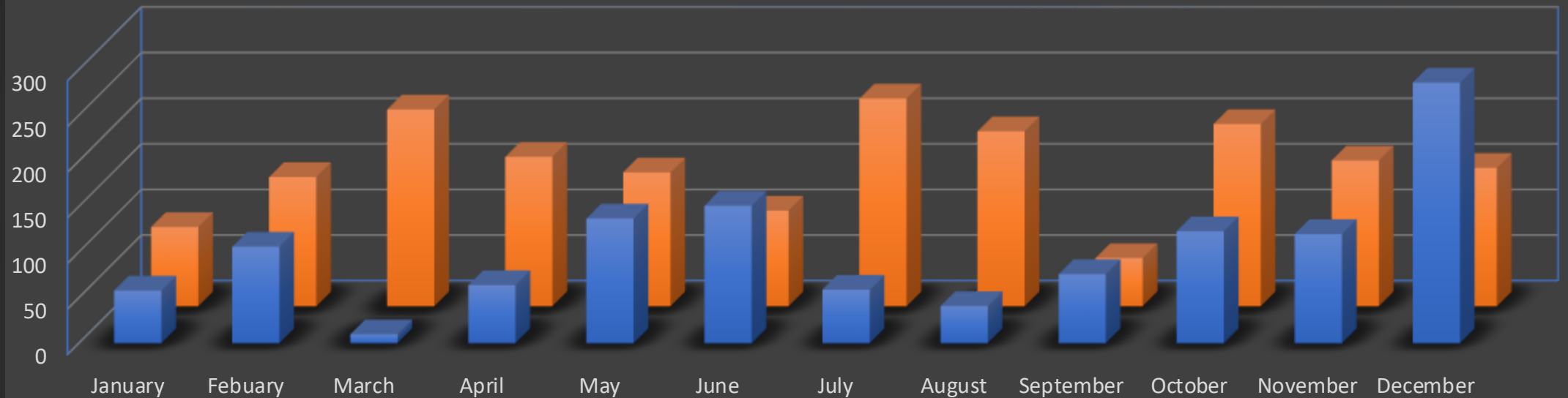
077°F

P5

Commodity of Interest



Rail Container Burglaries



■ 2023=1231 ■ 2024=1842

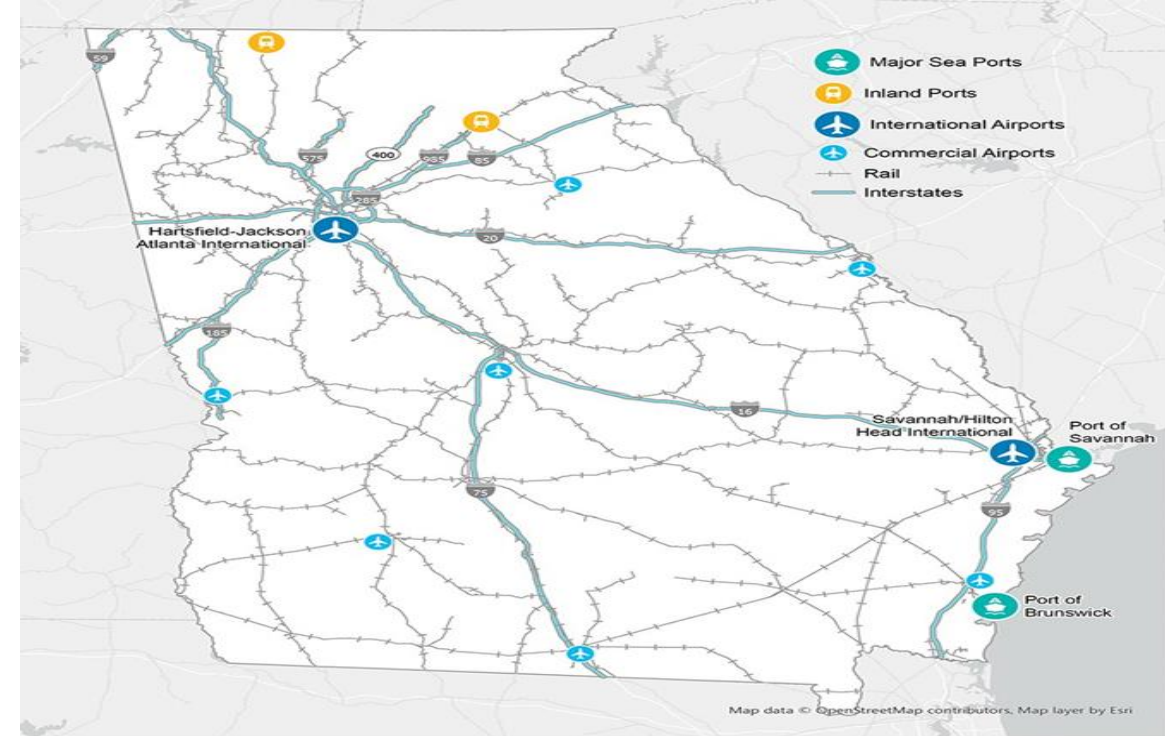
Robust and proactive security measures rooted in community collaboration

- Intelligence Driven
- Provide Intel, equipment, and personal
- Efficient and Effective
- Make Arrest and Push the narrative
- Attorney General- Organized Retail Crime
- Is it enough?



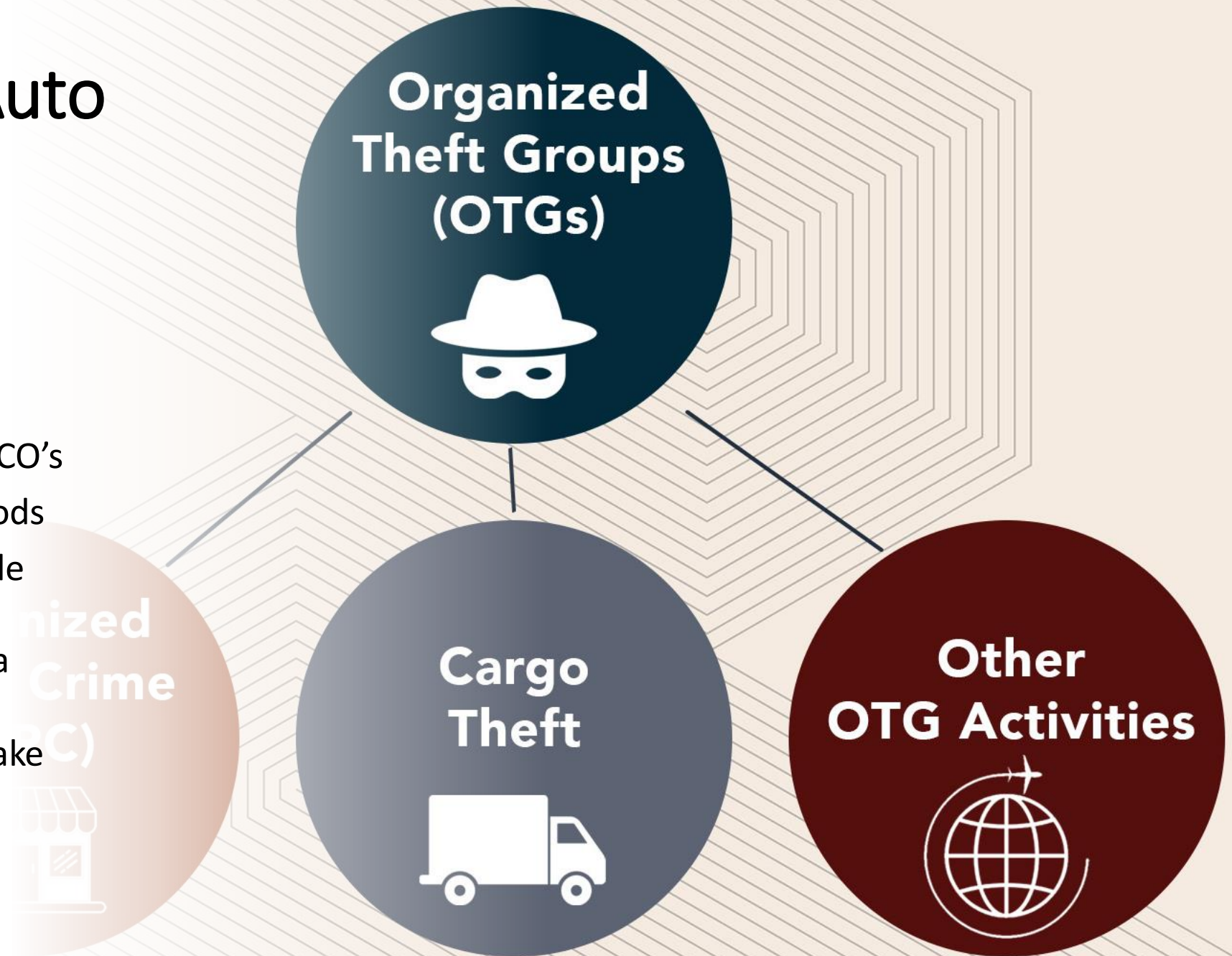
Maritime Transportation Security Act of 2002

- Where does the rest go?
- Legitimate trade routes exploited
- “Ports often are a major focus of Federal crime, including drug trafficking, cargo theft, and smuggling of contraband and aliens. Ports are often very open and exposed and are susceptible to large scale acts of terrorism that could cause a large loss of life or economic disruption”



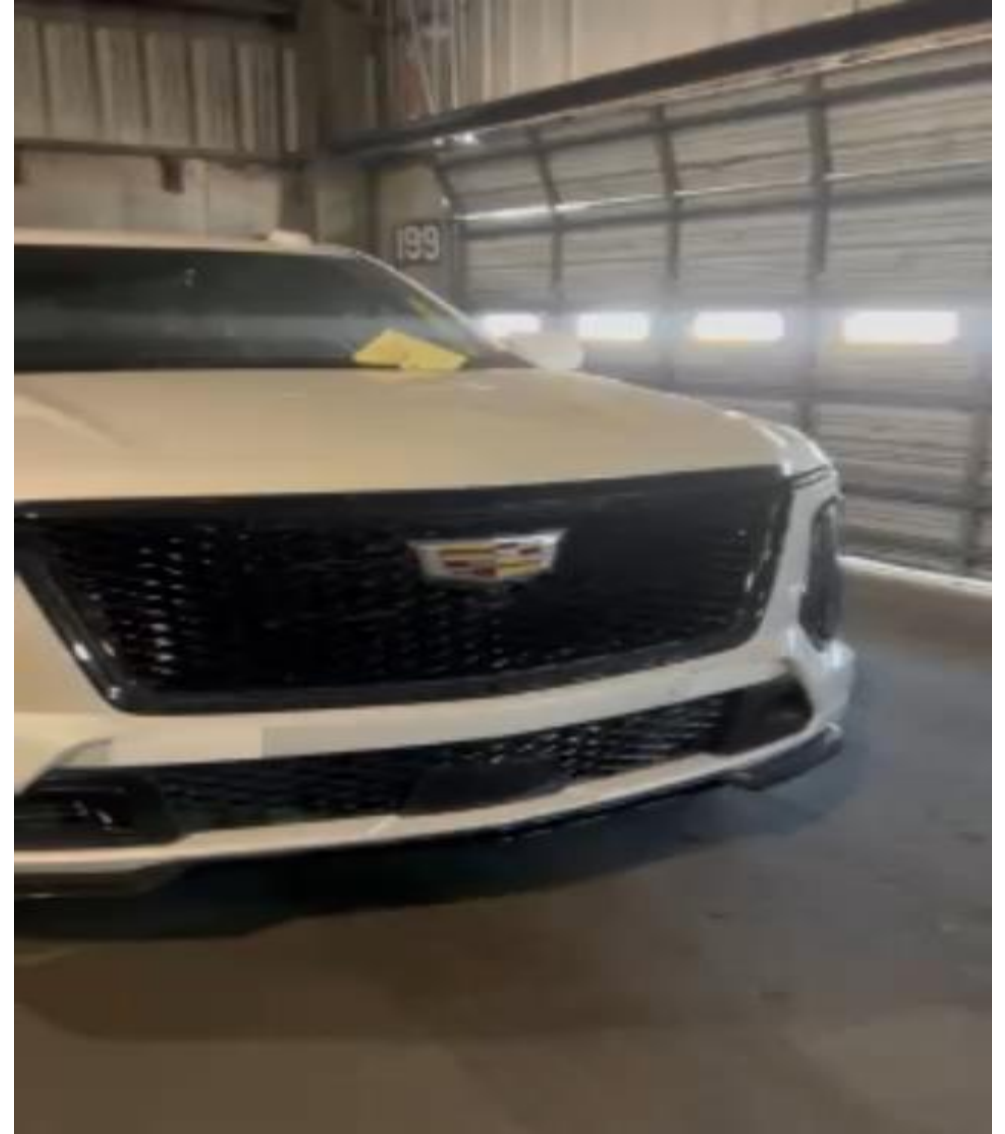
Cargo Theft, Auto theft and Smuggling

- The end game
- Interlinked components of TCO's
- High demand overseas of goods
- Exploiting the legitimate Trade Routes and its infrastructure
- More sophisticated, TBML via Transnational syndicates
- Double Brokering, Account Take Overs, Fraudulent Documents, Stolen Identities, etc.



Auto- Smuggling

- 8-10 million dollars annually
- Sophisticated net work
- Huge Financial losses- Dealers, Auctions, personal, and Insurance Companies
- Smuggled to: UAE, West Africa, South America, Iraq
- Targeting, Freight Forwarders and USPPI's, referrals, and case initiatives



Smuggling-The End is the beginning

- Network- GCTIG, Bob Hastings cargo theft involving plumbing supplies
- Known Auto Shipper
- Conducts surveillance and Intel
- Title 19, Border Search Authority
- New Challenges unfolded



Smuggling- The end is the beginning

- GCTIG-Double Brokered load of Cell Phones
- Identified 13 shipments that were smuggled out of the Ga. Ports
- Successfully seizing 3 of those shipments at the Port in Houston



Cargo theft and Smuggling

Cargo theft, Auto Theft are interconnected

TCO's exploit vulnerabilities in both the supply chain and the disconnect between Law Enforcement and the Private Sector

The more we understand how things get out of the country the better chance we have to prevent something from entering the country

What Keeps you up at night?



- Matthew Wilhoite
- Ports Authority Police
- Corporal- Investigator
- TFO- Homeland Security
- mwilhoite@gaports.com



**PORTS AUTHORITY
POLICE**