



# PORT BUSINESS UPDATE



**Wendy Fung | David Espinoza**  
**BD Manager | Security Services Manager**  
**Business Development**

**June 15, 2021**





PORT OF  
LOS ANGELES

Since 1909

PORT OF  
LONG BEACH

Since 1911

**SAN PEDRO BAY**





# WORLD'S 10<sup>TH</sup> BUSIEST PORT COMPLEX

No. 1 & 2 Ports in North America

17.3 Million TEUs in 2020

60% of all U.S. Inbound Containers

25% of all U.S. Outbound Containers

Port of  
Los Angeles

Long Beach





# Landlord Port

- No local tax dollars
- Revenue from terminal leases
- Net income reinvested in each Port
- \$170 billion in trade
- 2.6 Million U.S. jobs
- 51,000 jobs in Long Beach





# PORT OF LOS ANGELES

Since 1907



**WBCT  
PIER 100-131**



**TRAPAC  
PIER 136-147**



**YTI  
PIER 212-225**



**EVERPORT  
PIER 226-236**



**FMS  
PIER 300**



**APMT  
PIER 400**



**SSA  
PIER A**



**TTI  
PIER T**



**SSA  
PIER C**



**LBCT  
PIER E**



**ITS  
PIER G**



**SSA PCT  
PIER J**

# PORT OF LONG BEACH

Since 1911

# SAN PEDRO BAY



# 8.11

## MILLION TEUs



# BUSIEST YEAR

8.11 MILLION TEUs

8.09 MILLION TEUs

# 2020 H1 POLB CONTAINER VOLUME

CATEGORY	2020 (TEUs)	2019 (TEUs)	% CHANGE
LOADED INBOUND	1,659,966	1,813,810	-9.5%
LOADED OUTBOUND	734,219	732,224	+0.8%
EMPTYES	1,038,849	1,139,633	-9.9%
TOTAL	3,433,034	3,685,667	-7.9%

# 2020 H2 POLB CONTAINER VOLUME

CATEGORY	2020 (TEUs)	2019 (TEUs)	% CHANGE
LOADED INBOUND	2,338,374	1,944,629	+20.2%
LOADED OUTBOUND	741,671	740,579	+.001%
EMPTIES	1,570,241	1,261,195	+24.5%
TOTAL	4,650,286	3,946,400	+17.8%



# 2020 FULL YEAR POLB VOLUME

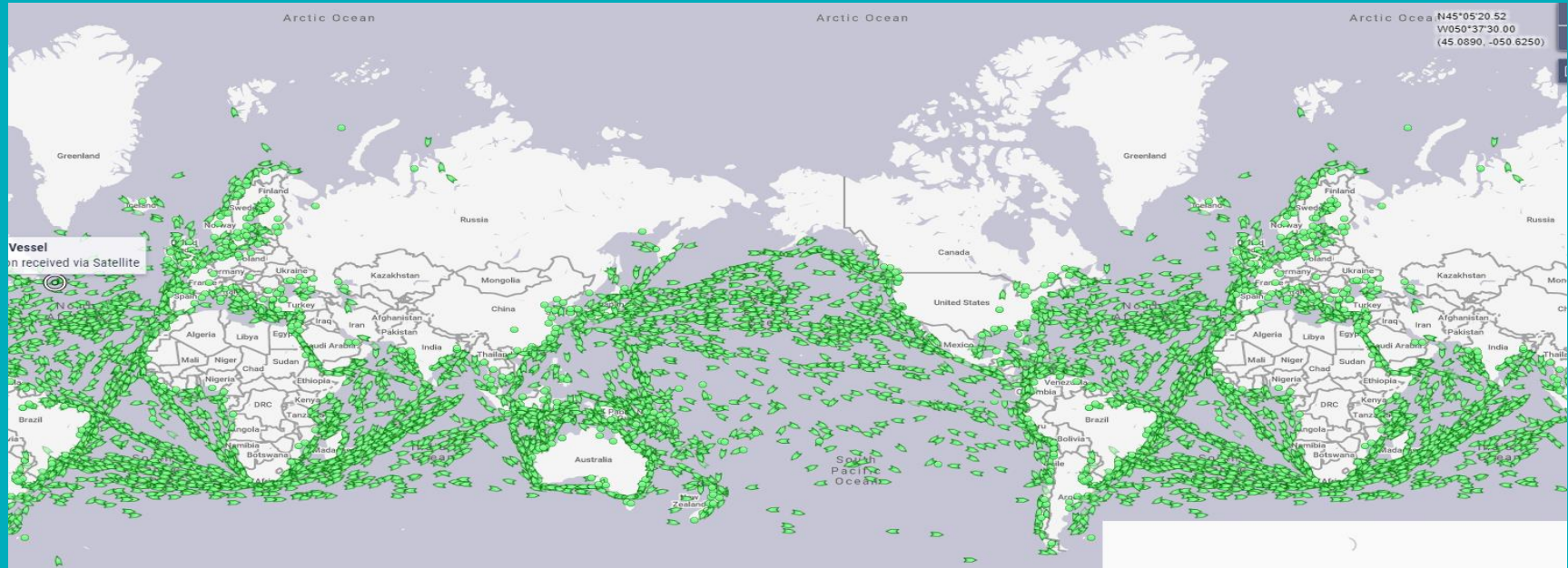
CATEGORY	2020 (TEUs)	2019 (TEUs)	% CHANGE
LOADED INBOUND	3,998,340	3,758,438	+6.38%
LOADED OUTBOUND	1,475,888	1,472,802	+0.21%
TOTAL EMPTYES	2,639,088	2,400,792	+9.93%
TOTAL	8,113,316	7,632,032	+6.31%

# 2021 Q1 VOLUME

CATEGORY	Q1 2021 (TEUs)	Q1 2020 (TEUs)	% CHANGE
LOADED INBOUND	408,172	234,570	+74.0%
LOADED OUTBOUND	139,710	145,442	-3.9%
TOTAL EMPTYES	292,016	137,652	112.1%
TOTAL	840,387	517,663	62.3%



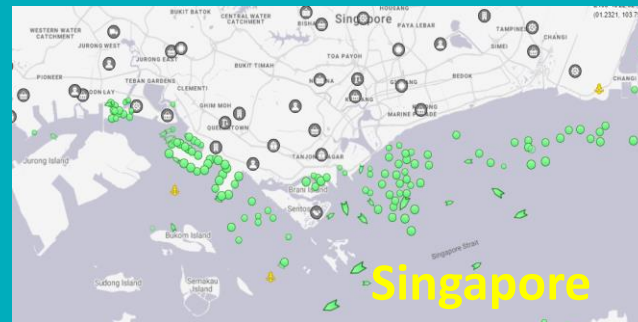
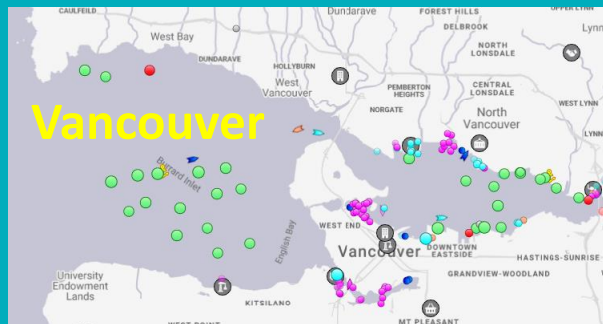
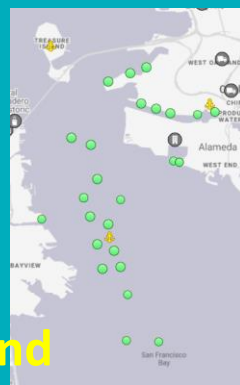
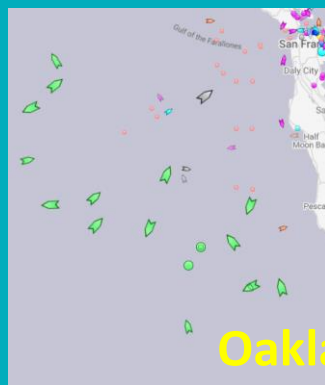
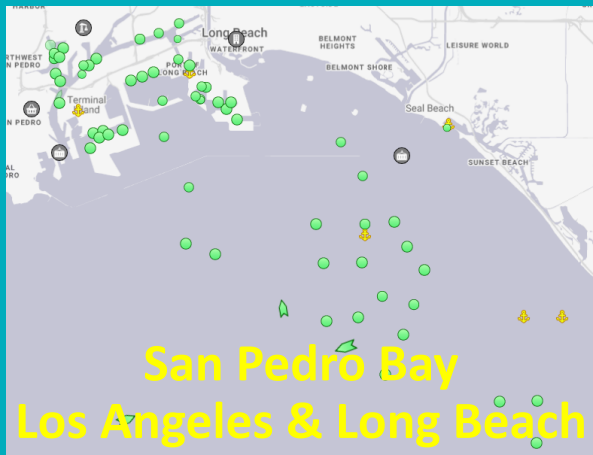
# PORT CONGESTION



- Normal Peak Seasons:
  - Import – Back to School, Christmas (Jun – Nov)
  - Export – Citrus, Grapes, Agricultural (Oct – Mar)
- Global Impact – not limited to U.S. / LA & Long Beach

# PORT CONGESTION

## [www.marinetraffic.com](http://www.marinetraffic.com)





# PORT CONGESTION (WHY)

- Import Surge → Extra Loaders
  - Retail restocking
  - Work and School From Home
  - E-Commerce
  - Location – Closest to Asia, Rail Connectivity, 3PLs
- Increase volume → Container, Chassis, Drayage, Labor
- Weather Delays
  - Vessel/Trains bunching



# What is POLB doing to mitigate Port Congestion?

- Short Term Overflow Resource (STOR)
- WAVE Report and COVID-19 Website with Vessel Data
- Expediting critical medical supplies through terminals
- Advocating for dock and transportation workers
- COVID testing site and vaccinations priorities
- APIs available at LBCT and ITS
- Extended terminal gate hours
- Advocating for 50% dual transactions
- Infrastructure improvements



# PORT CONGESTION-

## When will it end?

- Path of least resistance → Diversification of Distribution
- Vaccines → Back to work and play
- Resume travel, restaurants, services → Less online shopping
- Predictions:
  - Summer 2021?
  - Post Chinese New Year 2022?
  - **Email me your prediction to win a prize!**

# CAPITAL IMPROVEMENT PROJECTS



**BRIDGE TO EVERYWHERE**  
**15 % of trade moves through  
this bridge**



**LBCT – Middle Harbor Project**  
**Phase 3 – Estimated completion  
by end of 2021**



**\$1B On-Dock Rail  
Improvements**



**Pier- B Rail support facility**

# LEADER IN PORT SECURITY





# LAYERS OF SECURITY



Drug- and bomb-sniffing dogs



Port of Long Beach Harbor Patrol



Emergency Response



Law Enforcement Patrols



All cargo containers are checked for radioactive materials



Federal Partners



Maritime Domain Awareness

# COORDINATION



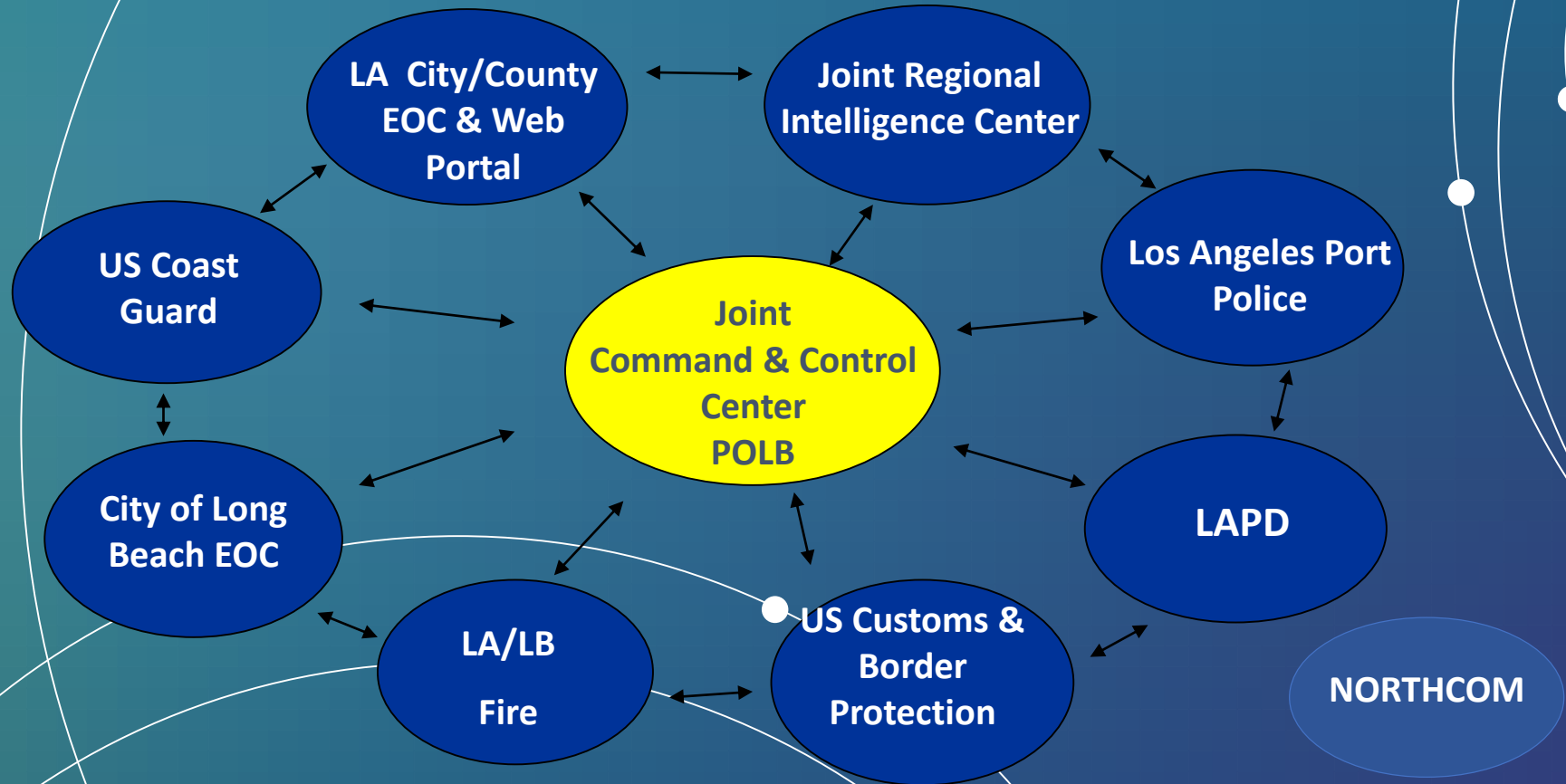




# JOINT COMMAND AND CONTROL CENTER



# MULTI-AGENCY COORDINATION



# MARITIME DOMAIN AWARENESS



5/20/18 11:26:10 AM - P.01711. POLYMASTERMASTER "SUNNER" 2014 SECURIT. NIKITNOV, RUSS



©2014 NAB. NEGATIVE BSC, A/T/F INFORMATION

CONFIDENTIAL - NOT FOR PUBLICATION



## SECURITY FIBER OPTIC NETWORK

Client No:	271
Date:	MAY 2012
Designed By:	NU
Figure 1	

Copyright Text: Yes

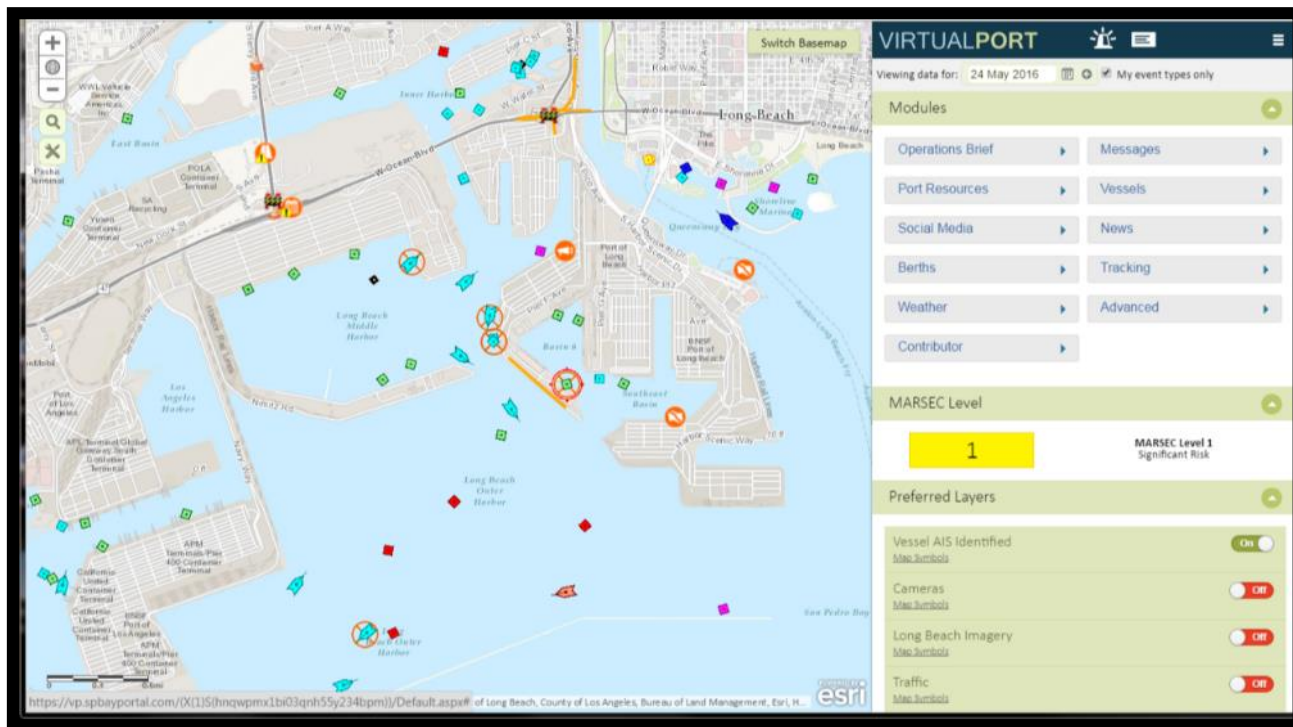


Port of LONG BEACH

# DOMAIN AWARENESS



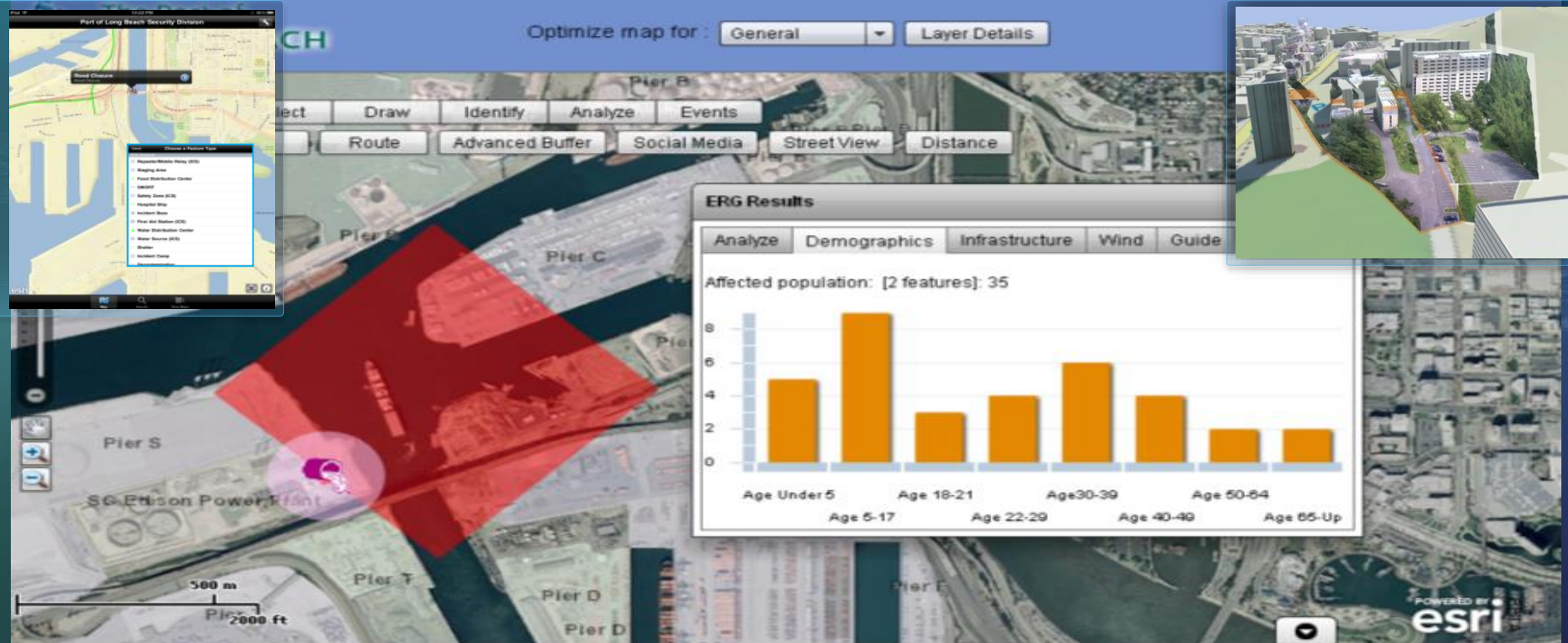
# VIRTUAL PORT





# INFORMATION SHARING

## Geo-spatially Based Reference and Information Systems



Port of LONG BEACH



## Data Suppliers/Sources

Reference and real time (tracking) data



Port of  
Long Beach



Stakeholders/  
partners



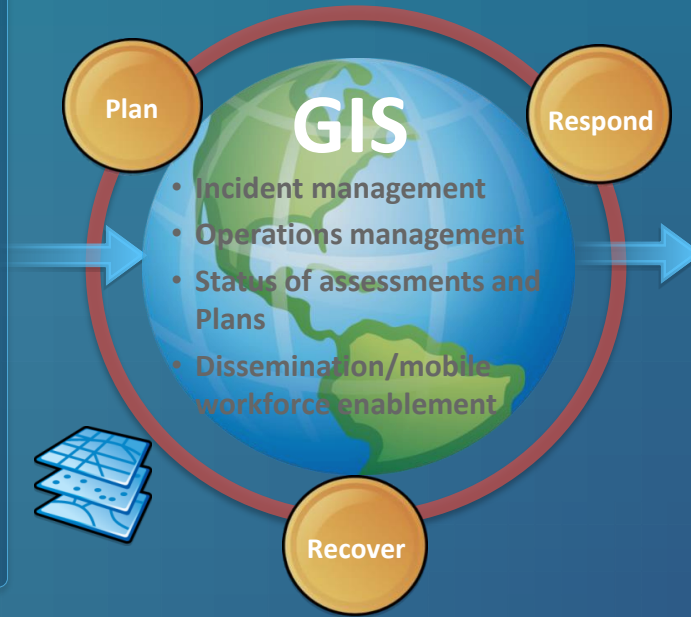
Open source/  
Internet



Commercial



GIS Community



## Business Functions/Users

Distributed content, analysis, and services

Daily  
Operations



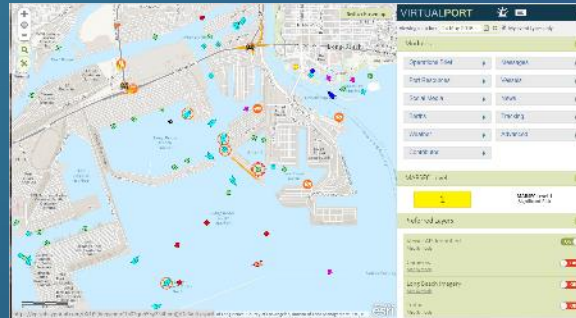
Real Time  
information  
Analysis



Event  
Management



Business  
Continuity

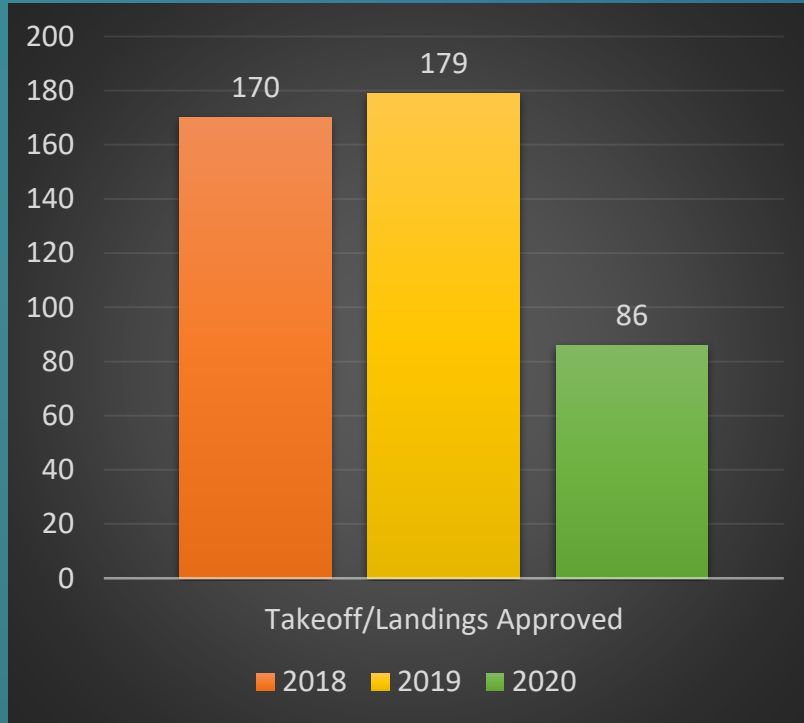


Port of **LONG BEACH**

# **SECURITY DIVISION GRANTS AND ADMINISTRATION**

- **Budget Preparation, Monitoring & Forecasting**
- **Procurements & Contracts**
- **Grants Management**
- **Permit Administration**
- **Division Communications**
- **Special Projects**
- **Strategic Planning & Performance Measures**

# Permits



Port of **LONG BEACH**



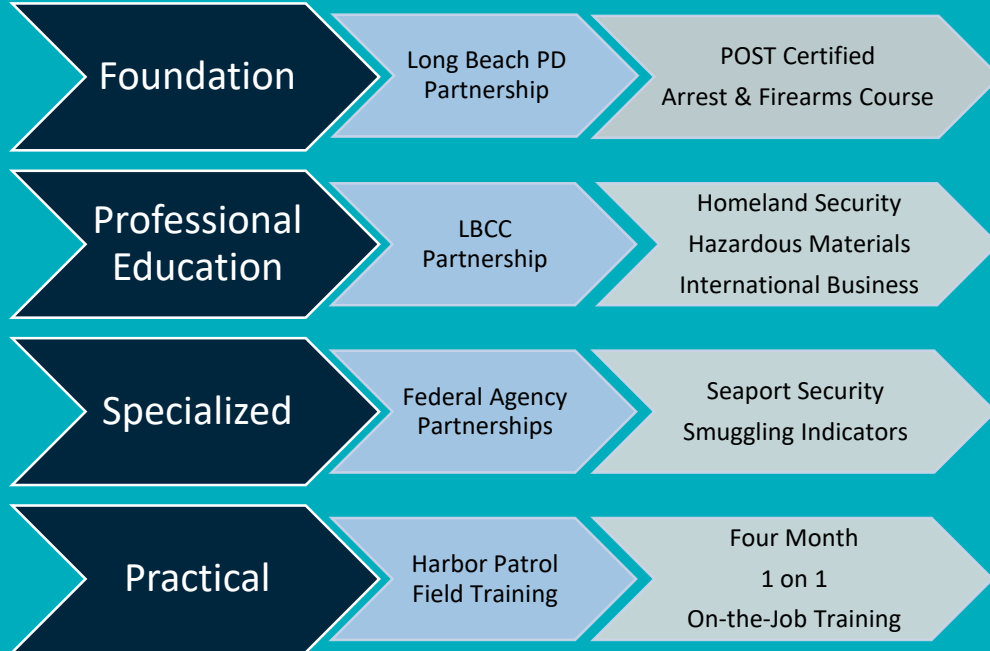
# Operational Highlights

- COVID-19 Response
- Civic Engagement
- Traffic Management



# Recruitment and Training

## Maritime Security Academy





Port of  
**LONG BEACH**  
THE PORT OF CHOICE







# Q & A

# THANK YOU



Port of  
**LONG BEACH**  
THE PORT OF CHOICE

**Wendy Fung**  
Business Development Manager  
[Wendy.Fung@POLB.com](mailto:Wendy.Fung@POLB.com)

**David Espinoza**  
Security Services Manager  
[David.Espinoza@POLB.com](mailto:David.Espinoza@POLB.com)